

DiskMgr

DiskMgr has been developed primarily for use in a Windows Forensic Environment (*WinFE*) to provide a user friendly method of changing the following *DISK* attributes -

- *Offline*
- *Online*
- *Read-Only*
- *Read-Write*

DiskMgr is similar in use to *Colin Ramsden's 'Write Protect'* application (see [here](#)). *DiskMgr* is available in native Windows 32-bit and 64-bit versions.

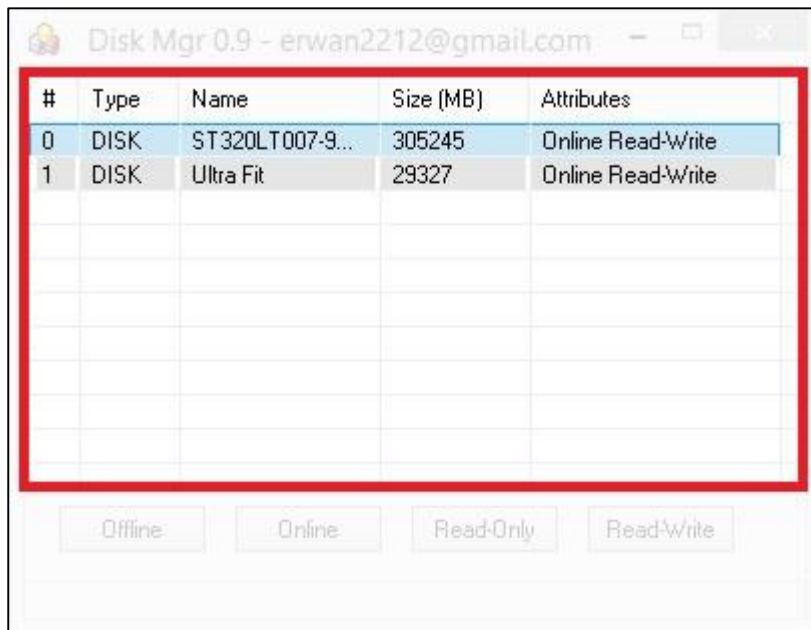
The Microsoft *DiskPart* application has historically been used in *WinPE* to manipulate *DISK* attributes. Unfortunately, if *WinFE* registry settings have been applied, then *DiskPart* may fail to change certain *DISK* attributes, as displayed in the textbox below (output is from *DiskPart* version 6.1.7601) -

```
DISKPART> attribute disk
Current Read-only State : No
Read-only : No
Boot Disk : No
Pagefile Disk : No
Hibernation File Disk : No
Crashdump Disk : No
Clustered Disk : No

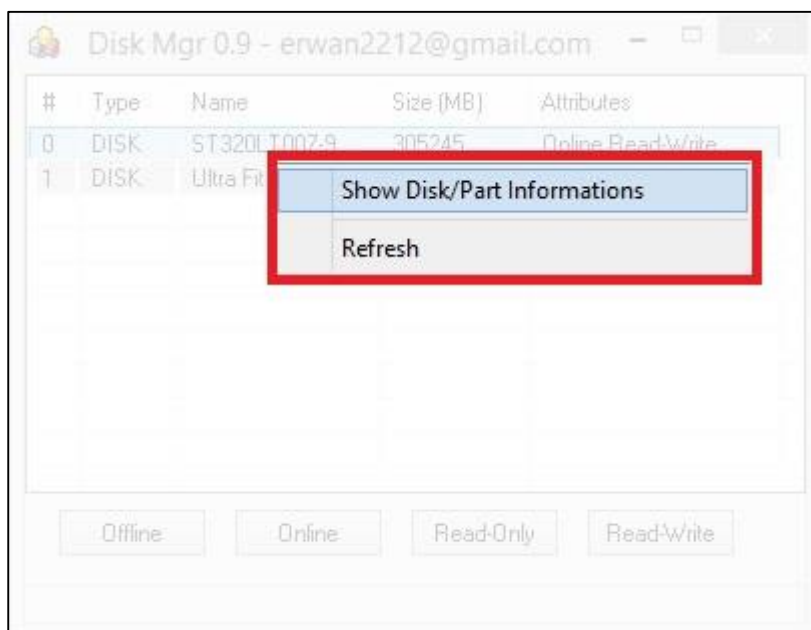
DISKPART> attribute disk set readonly

DiskPart failed to set disk attributes.
```

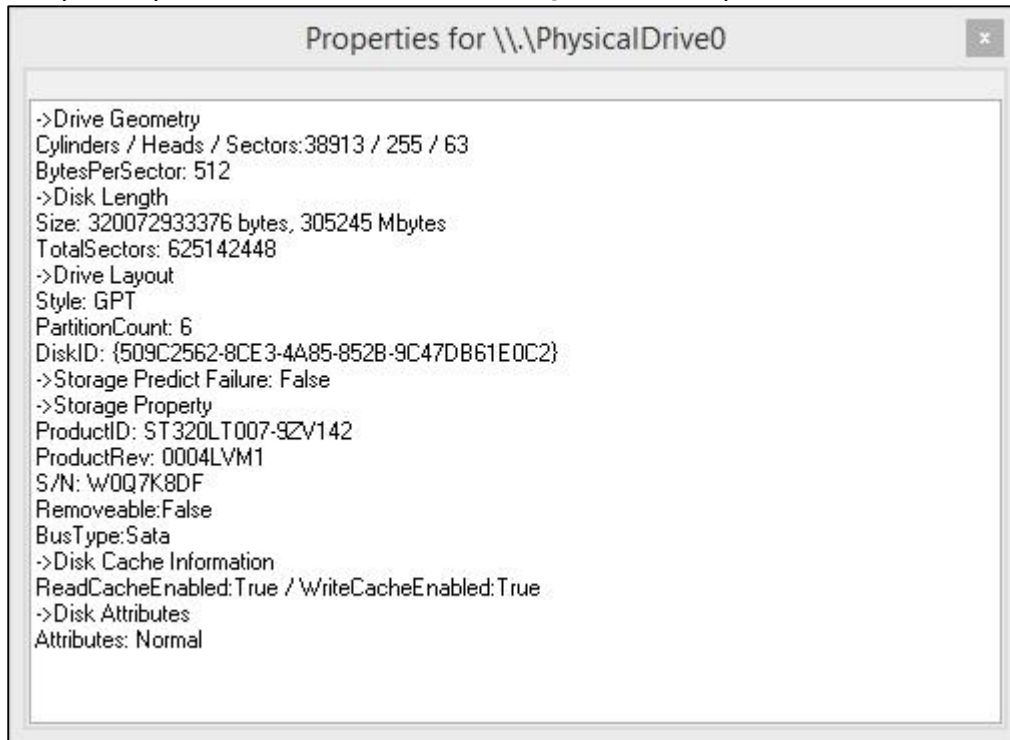
DiskMgr utilises the Microsoft API to set/change *DISK* attributes. The program has a very simple User Interface with an information panel displaying a list of *DISKS* and some basic information (including attributes) -



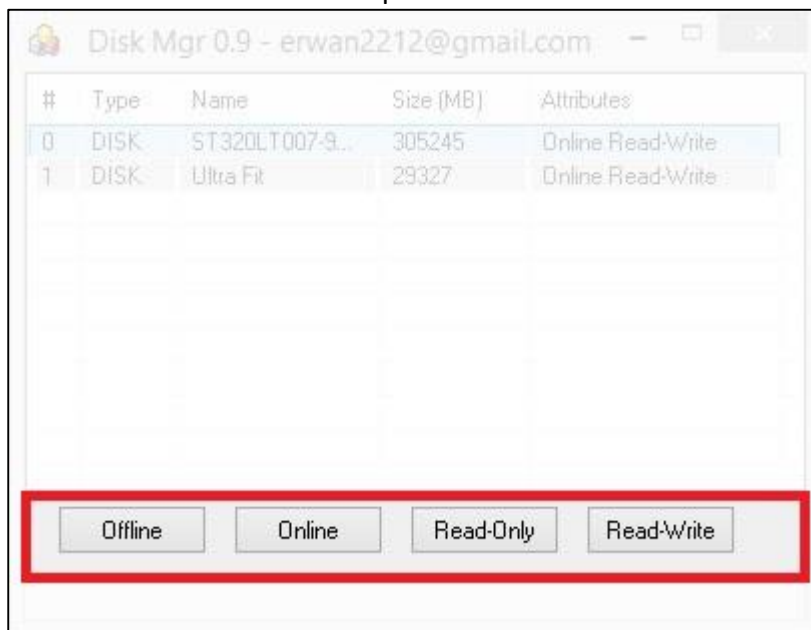
Right-clicking in the information window will display context sensitive options, including *Show Disk/Part Informations* –



Sample output from the *Show Disk/Part Informations* option -



Underneath the information panel is a row of buttons for changing attributes -

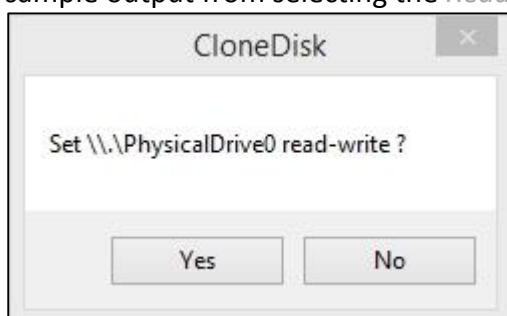


And below is a brief summary of these options –

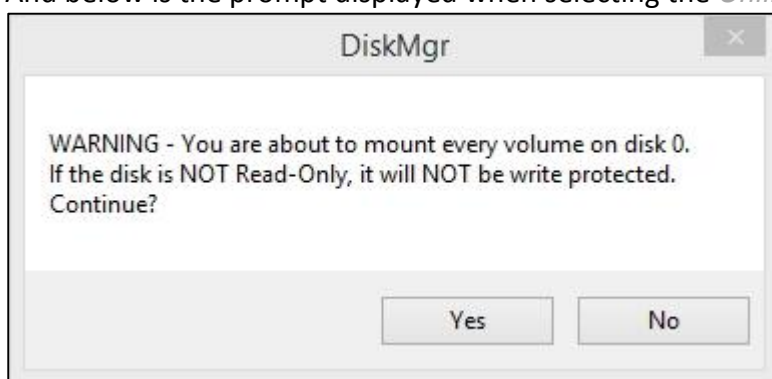
- *Offline* - change the target *DISK* attribute to *Offline*. This option will dismount any volumes on the target *DISK*.

- *Online* - change the target *DISK* attribute to *Online*. This option will automatically mount any volumes on the target *DISK* - even if the *NoAutoMount* registry setting has been applied.
- *Read-Only* - set the target *DISK* attribute to *Read-Only*, write protecting the *DISK* and any volumes on it. If the *DISK* is *Online* when this setting is applied, then *DiskMgr* will temporarily *Offline* the *DISK* before applying the changes.
- *Read-Write* - set the target *DISK* attribute to *Read-Write*, removing any write protection from the disk and any volumes on it. If the *DISK* is *Online* when this setting is applied, then *DiskMgr* will temporarily *Offline* the *DISK* before applying the changes.

Pressing any of the buttons will display a prompt before committing any changes. Below is a sample output from selecting the *Read-Write* option -



And below is the prompt displayed when selecting the *Online* option -



DiskMgr has been developed by *Erwan.L*. At the time of writing *Erwan* has not added the program to his own site, however he has kindly given consent for it to be distributed with *MistyPE/Mini-WinFE*. I would like to express my sincere gratitude to *Erwan* for spending his valuable time developing this program - thank you my friend.

Erwan's website - <http://erwan.labalec.fr/>